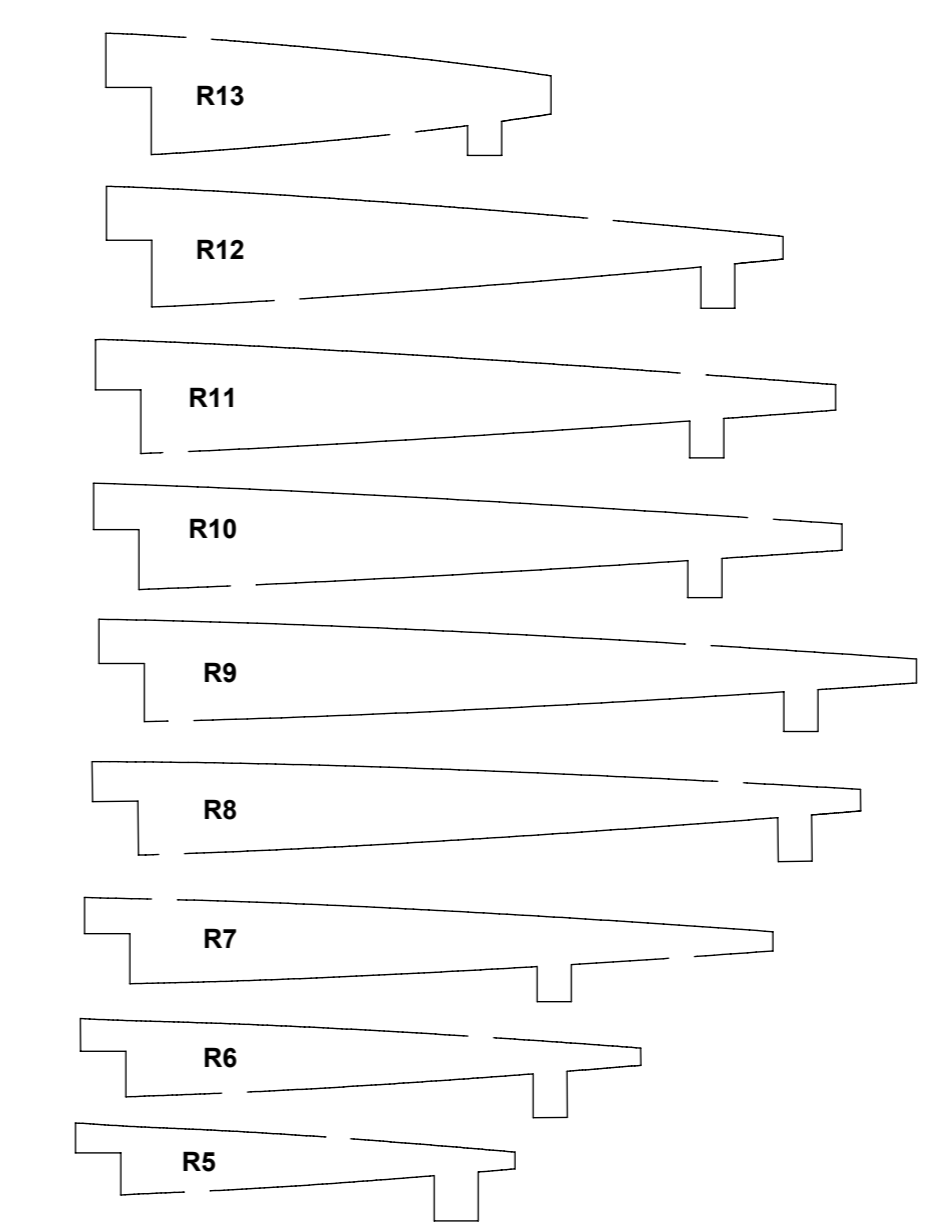
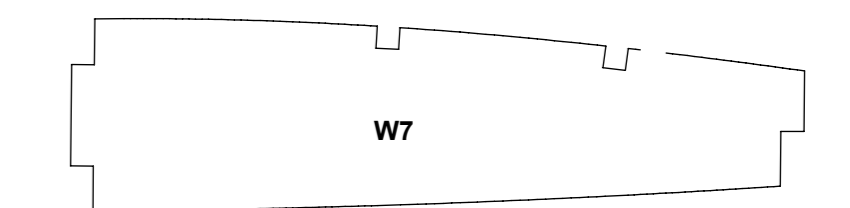
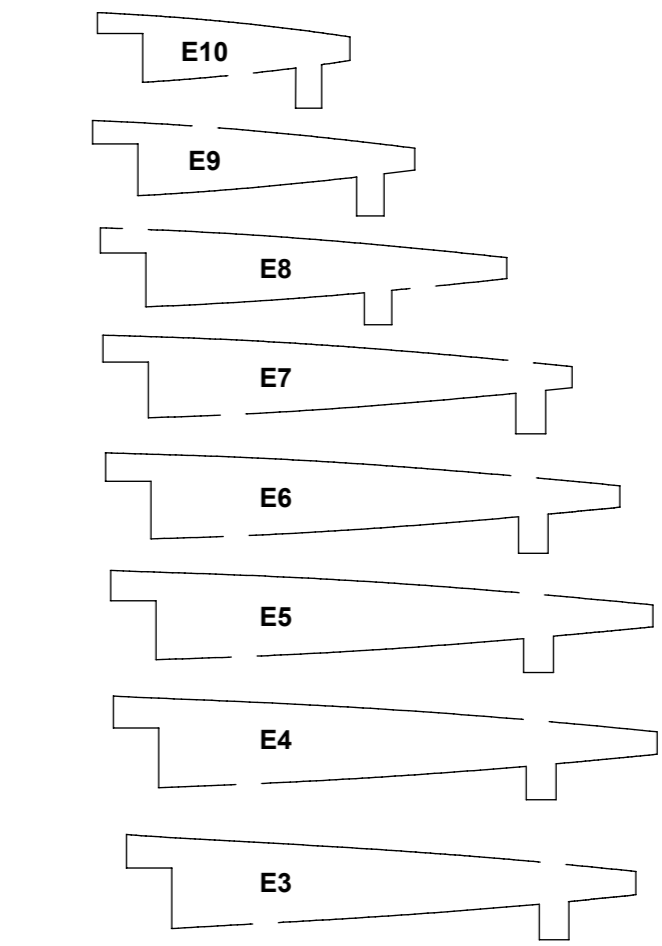


1/4" Balsa--MAKE 1 OF EACH UNLESS OTHERWISE NOTED

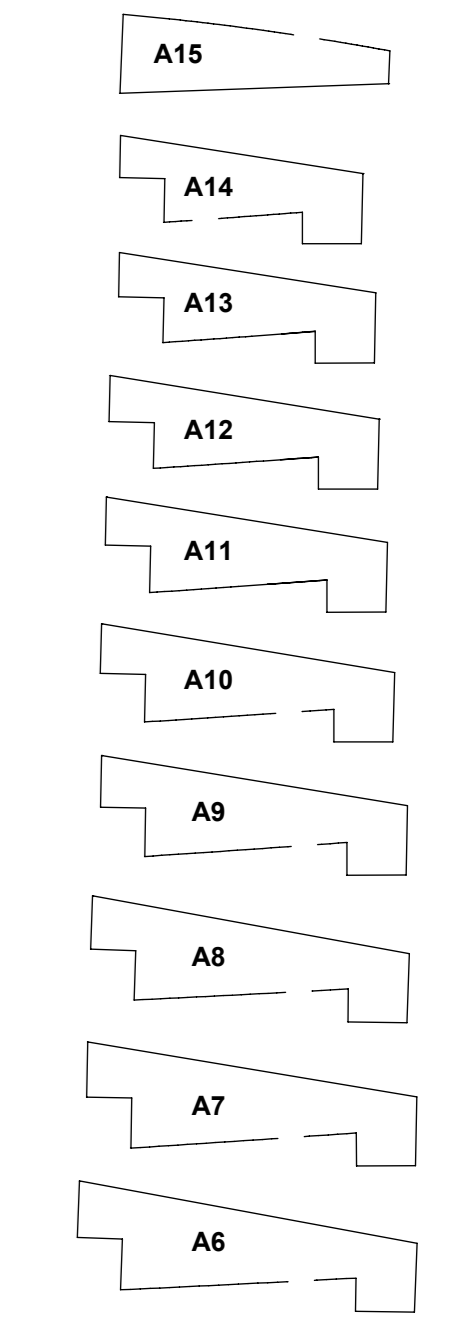
PARTS OUTLINES: THIS KIT WAS DESIGNED FOR LASER CUTTING FROM THE START. BUT FOR THOSE OF YOU WILLING TO CUT BY HAND, HERE ARE THE OUTLINES FOR ALL OF THE PARTS FROM THE SHORT KIT. PLEASE DISREGARD THE TABS IN THE OUTLINES THAT ARE USED BY THE LASER CUTTER.



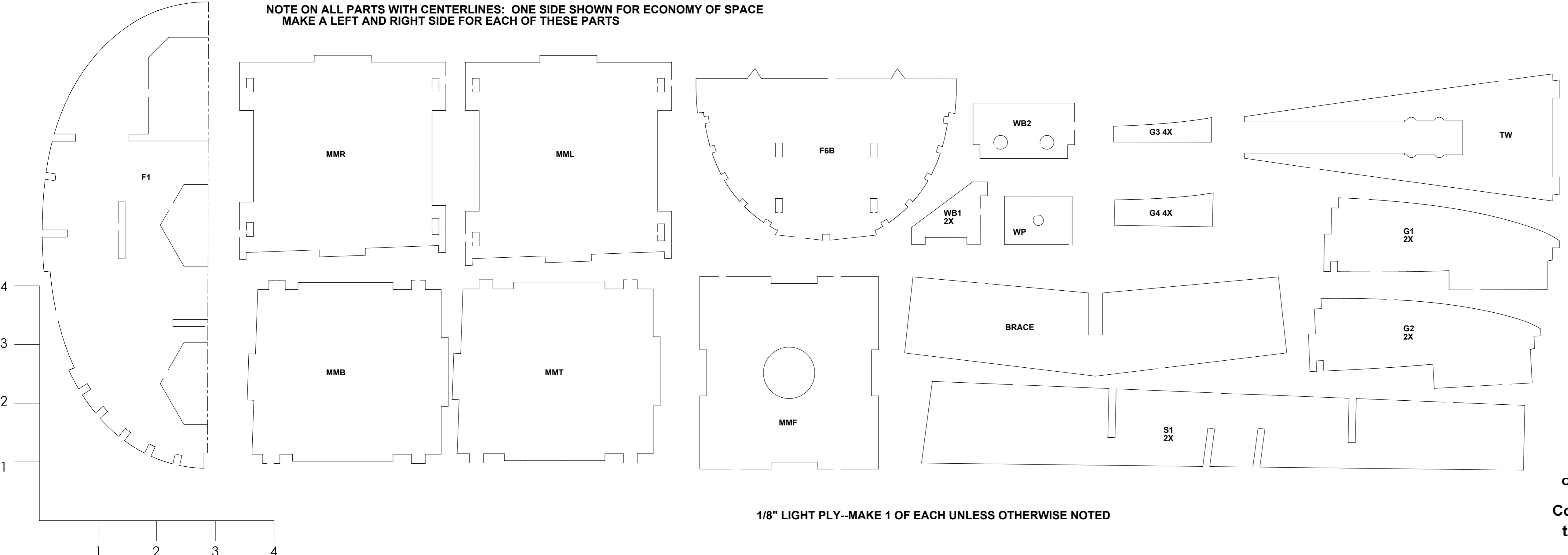
1/16" Balsa--MAKE 1 OF EACH



1/16" Balsa--MAKE 2 OF EACH

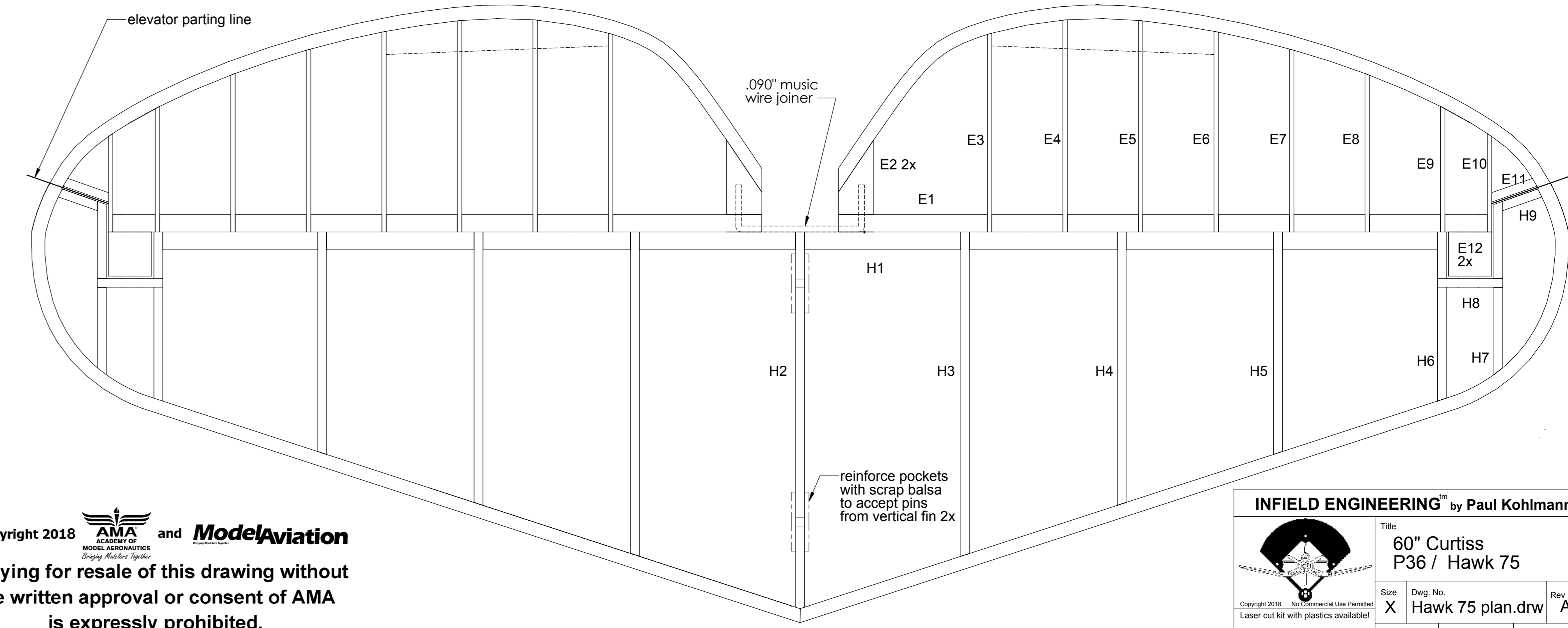


NOTE ON ALL PARTS WITH CENTERLINES: ONE SIDE SHOWN FOR ECONOMY OF SPACE. MAKE A LEFT AND RIGHT SIDE FOR EACH OF THESE PARTS



1/8" LIGHT PLY--MAKE 1 OF EACH UNLESS OTHERWISE NOTED

HORIZONTAL TAIL PLANE:
Follow Tail Group Assembly notes from page 1.



Copyright 2018 **AMA** and **ModelAviation**
MODEL AERONAUTICS
Energy. Passion. Spirit.
Copying for resale of this drawing without the written approval or consent of AMA is expressly prohibited.

INFIELD ENGINEERING™ by Paul Kohlmann

Title: **60" Curtiss P36 / Hawk 75**

Size: X
Dwg. No: **Hawk 75 plan.dwg**
Rev: A

Scale: 1:1
Weight: 60oz
Sheet 3 of 4

www.infieldengineering.com