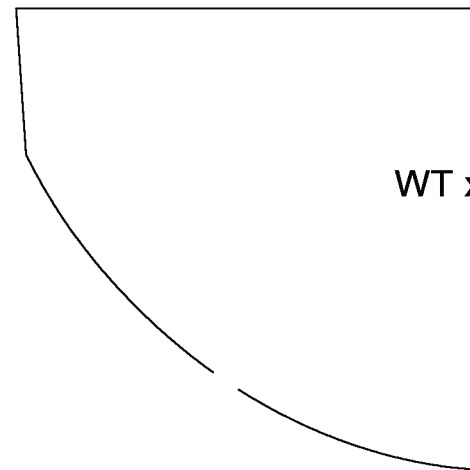
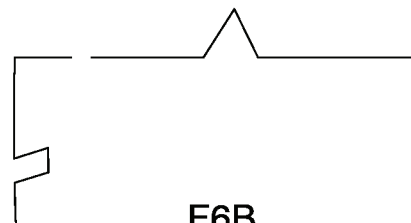
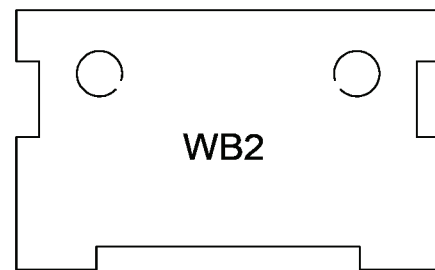
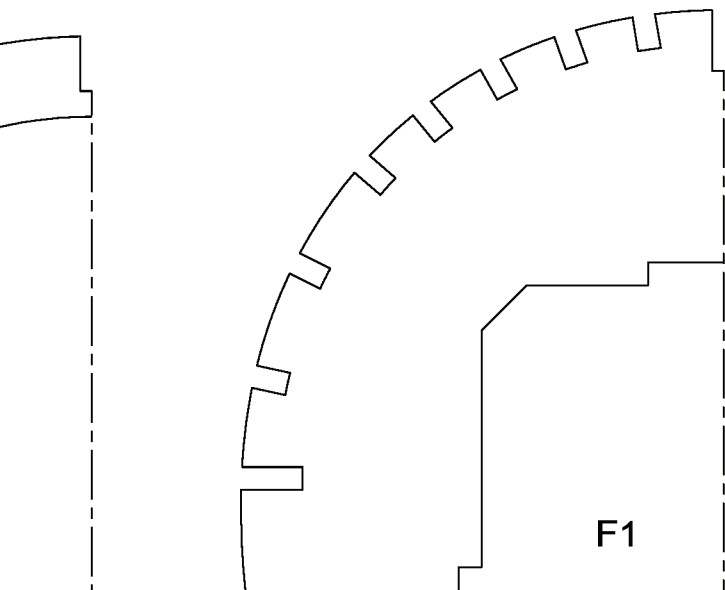


NOTE ON ALL PARTS
CENTERLINES: ON
ECONOMY OF SPACE

MAKE A LEFT AND
EACH OF THESE PA

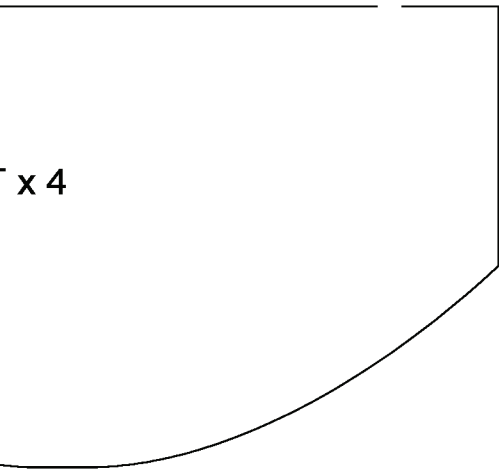


1/4" BALSAA--
UNLESS OTH



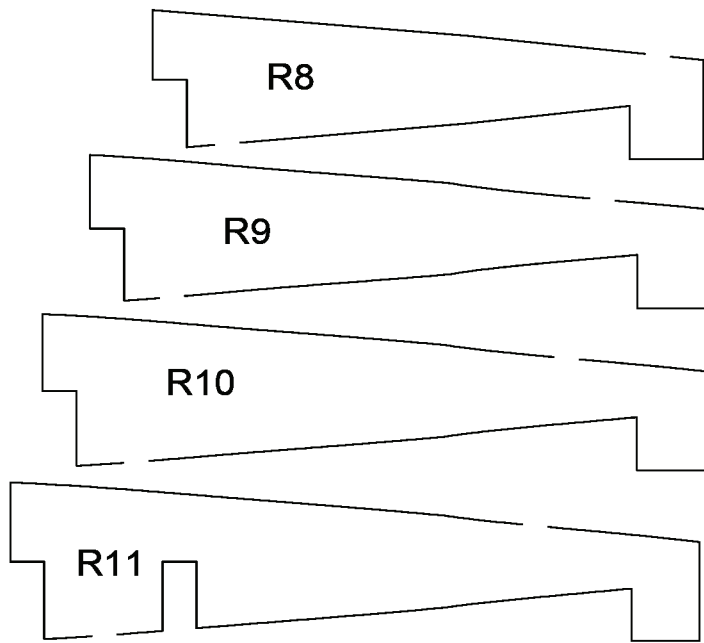
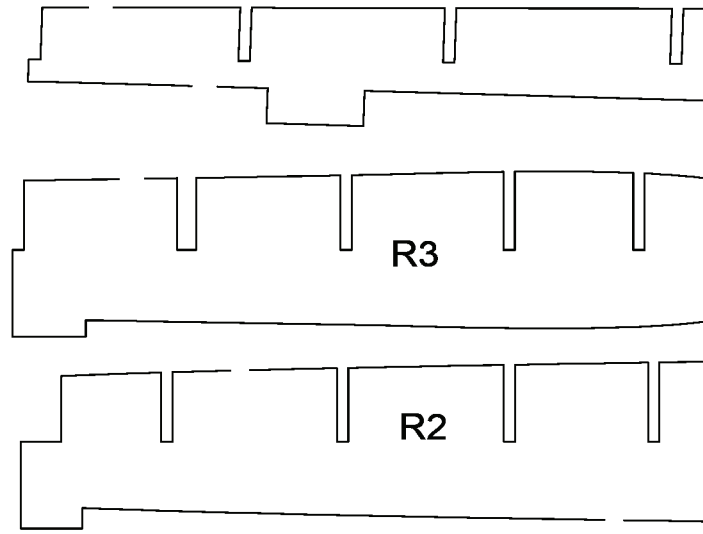
PARTS WITH
ONE SIDE SHOWN FOR
FACE

RIGHT SIDE FOR
PARTS

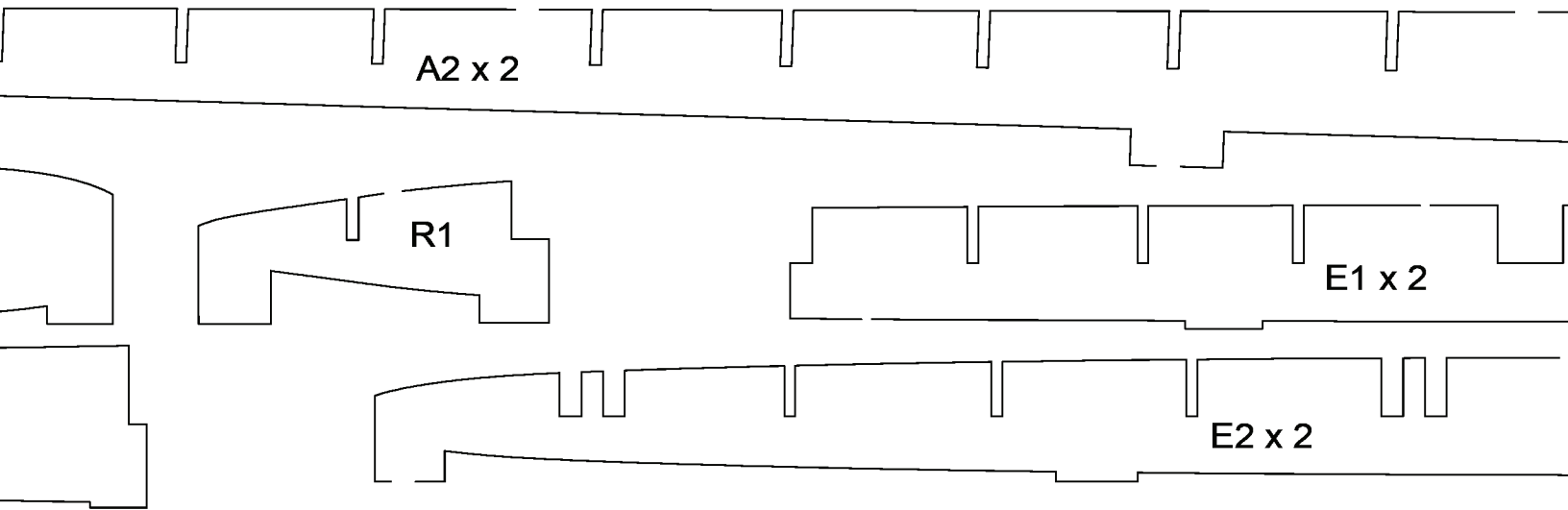


-MAKE 1 OF EACH
OTHERWISE NOTED

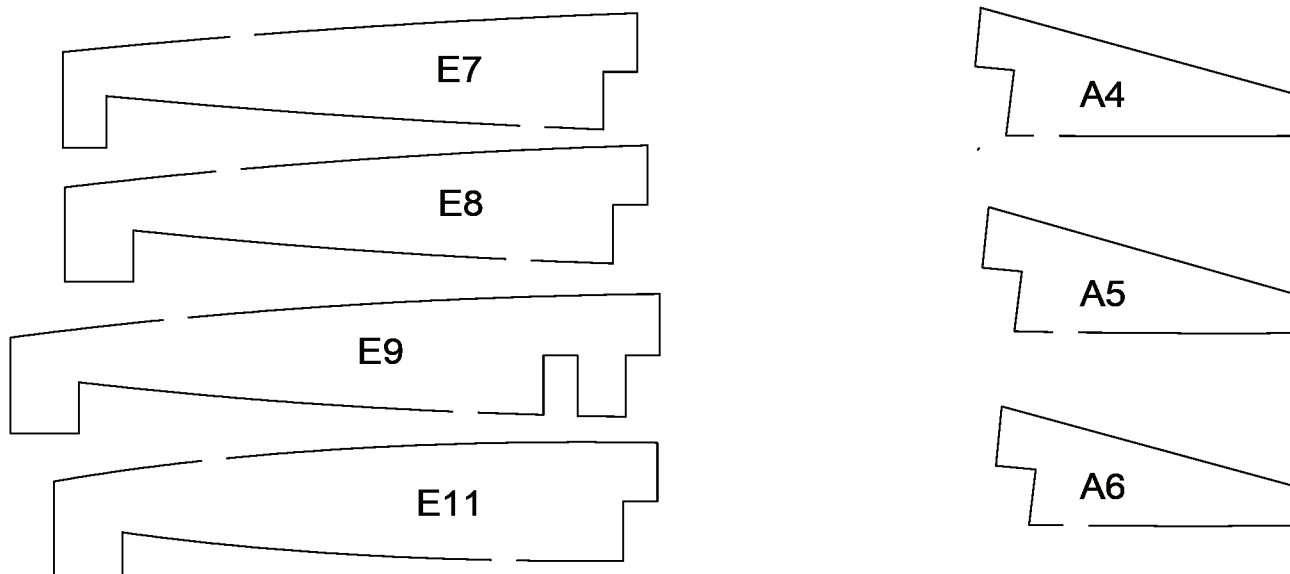
PARTS OUTLINES: THIS
OF YOU WILLING TO C
PLEASE DISREGARD TI



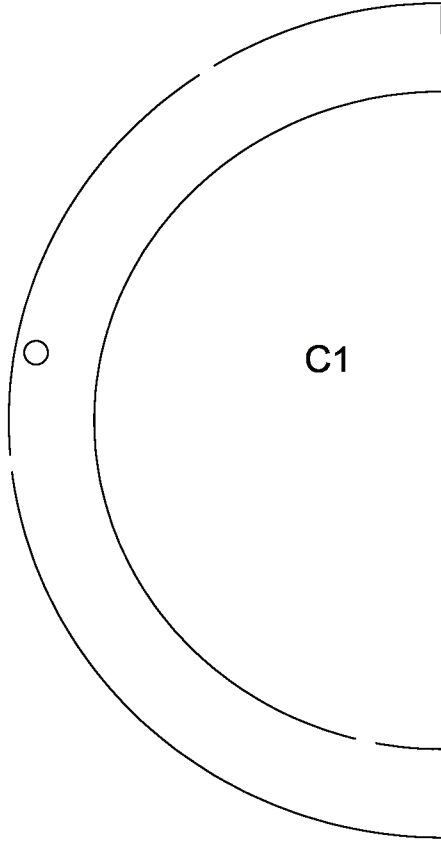
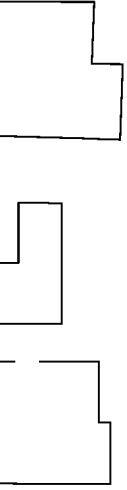
THIS KIT WAS DESIGNED FOR LASER CUTTING FROM THE START. BUT FOR THOSE WHO WANT TO CUT BY HAND, HERE ARE THE OUTLINES FOR ALL OF THE PARTS FROM THE KIT. THE TABS IN THE OUTLINES THAT ARE USED BY THE LASER CUTTER.



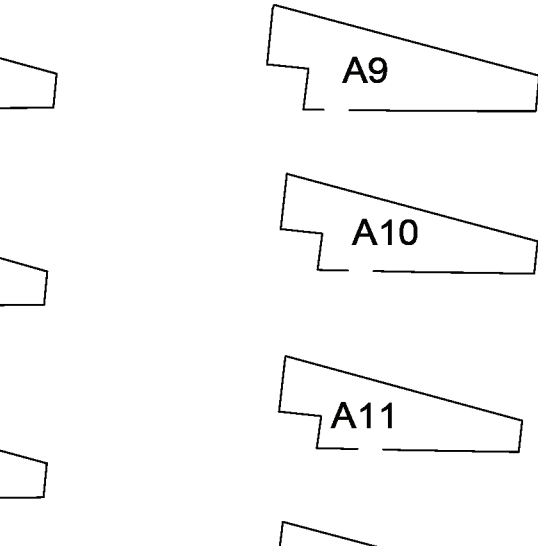
3/16" BALSA--MAKE 1 OF EACH
UNLESS OTHERWISE NOTED

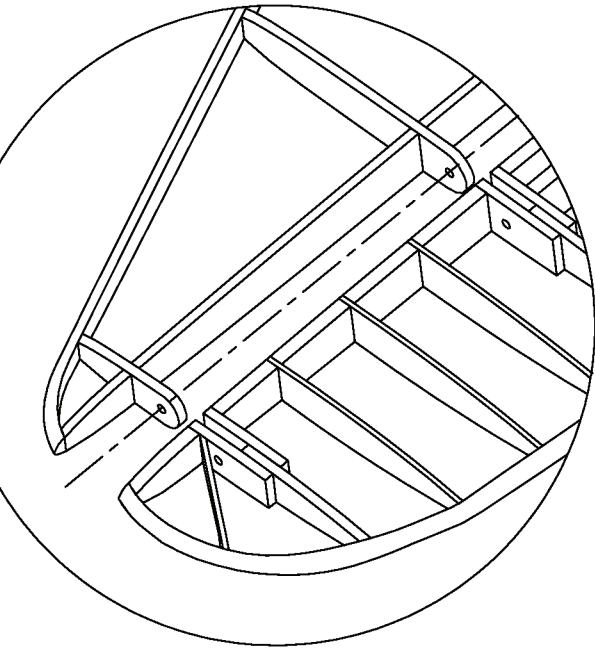


THOSE
THE SHORT KIT.

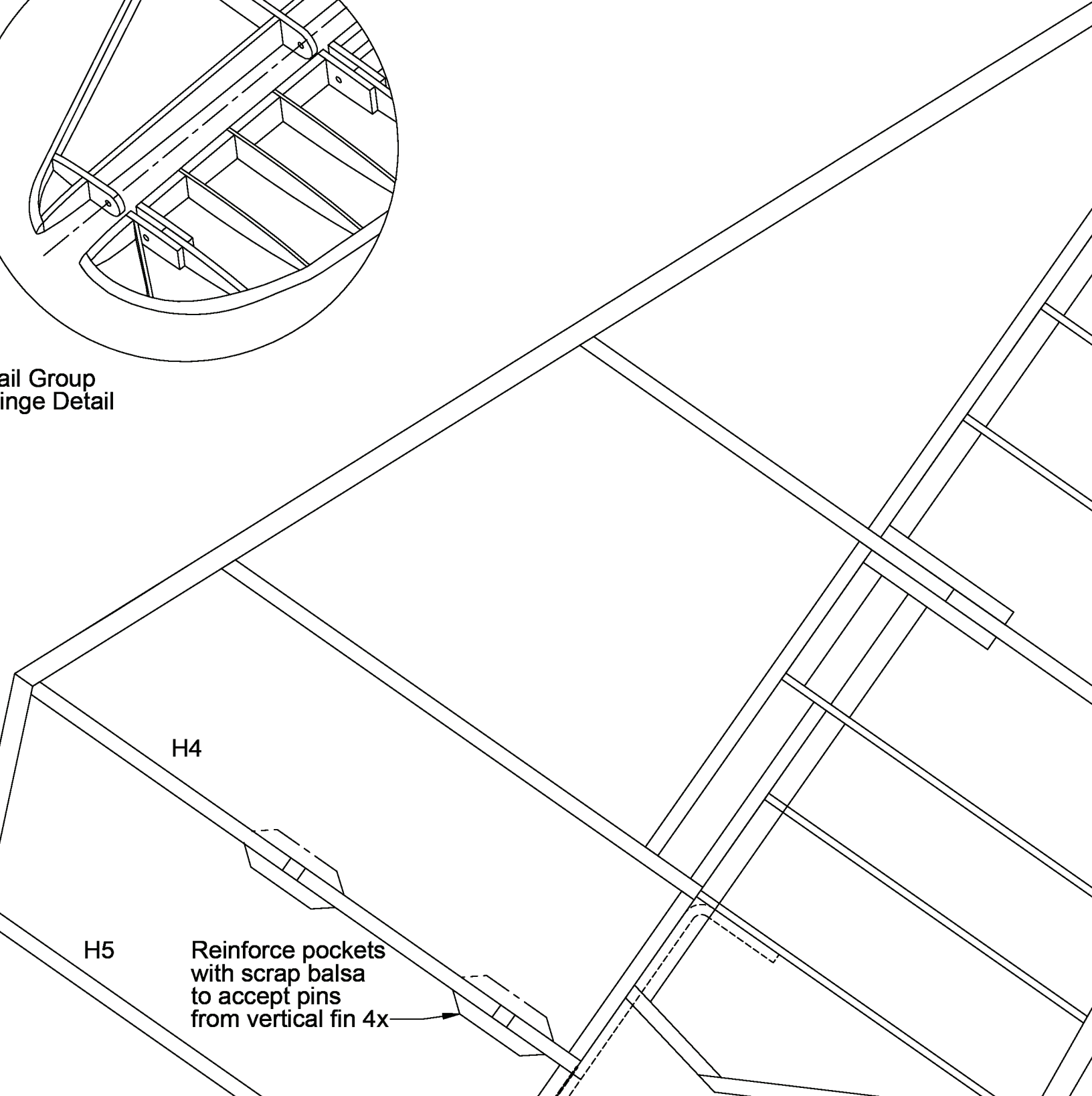


Tai
Hin





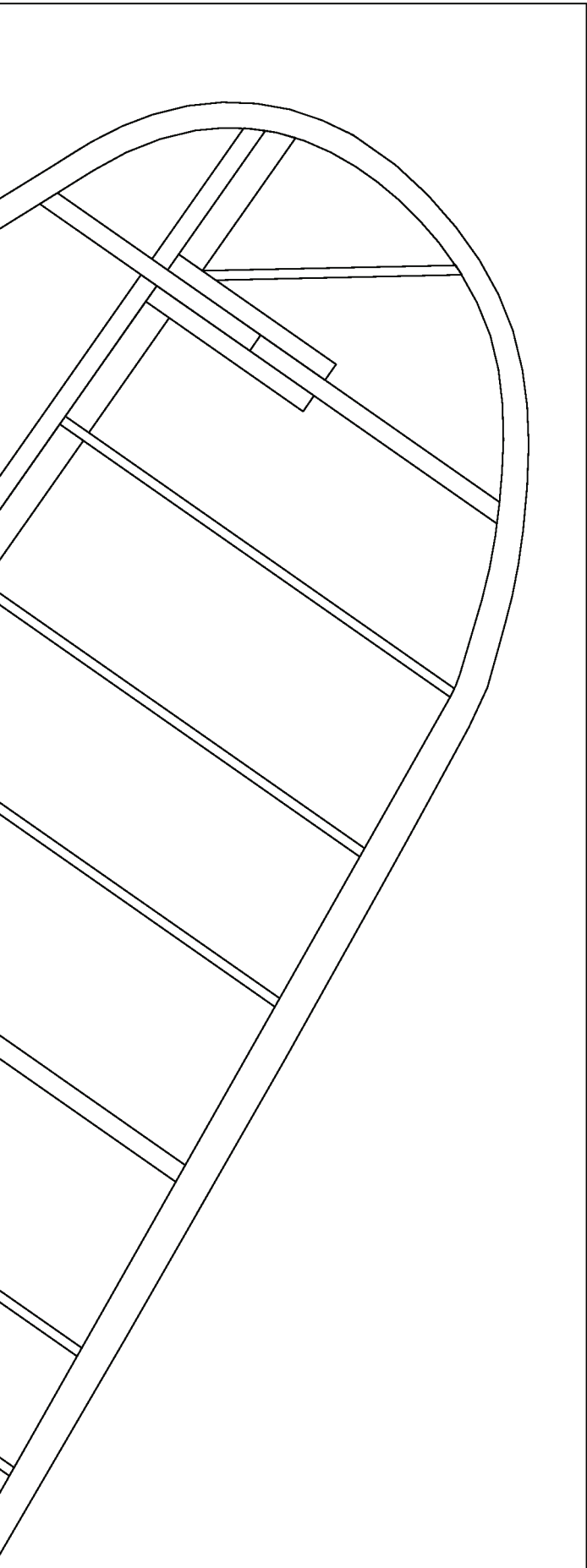
Tail Group
Hinge Detail

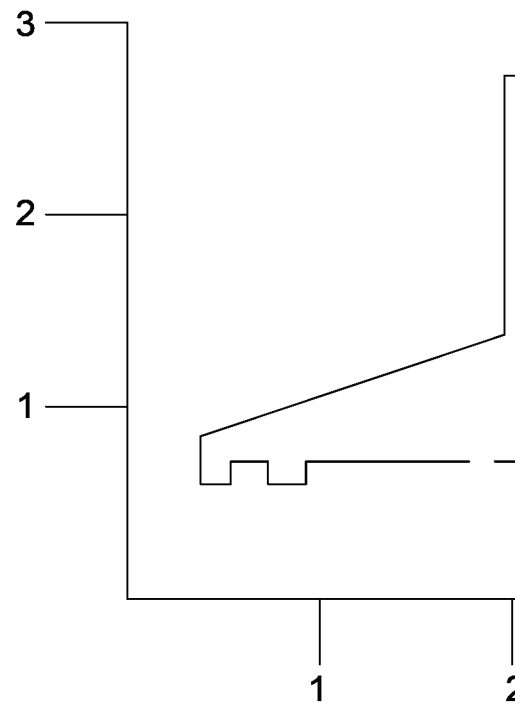
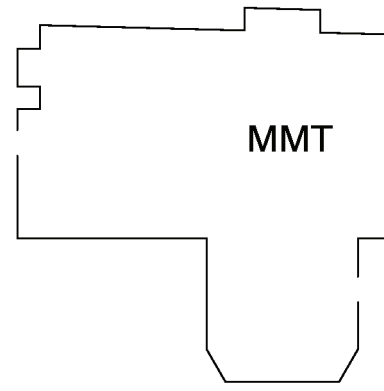
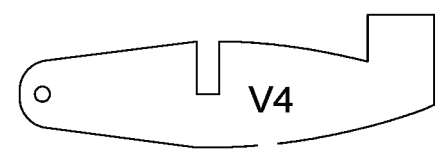
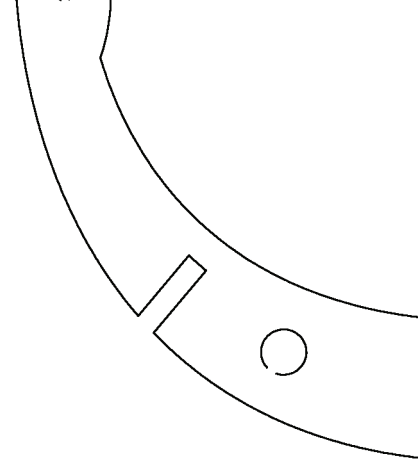


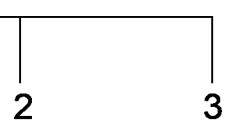
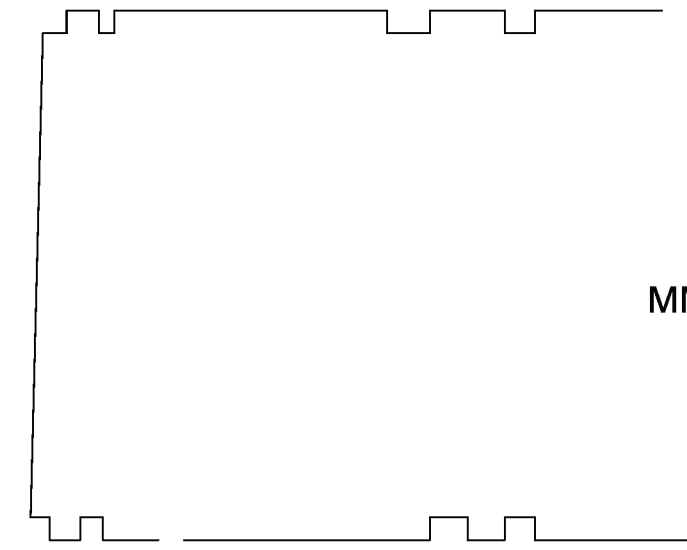
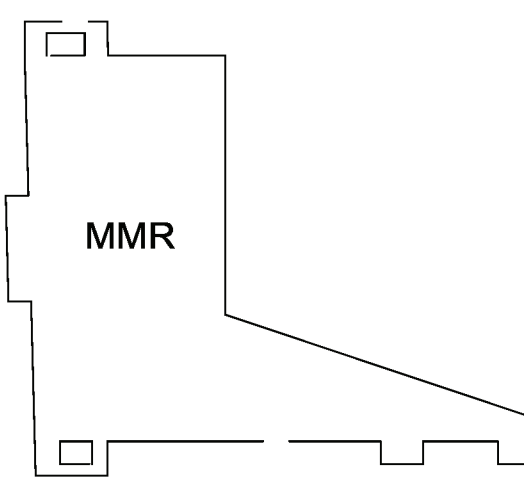
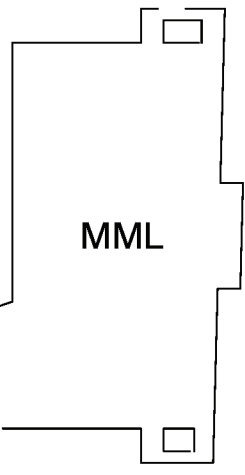
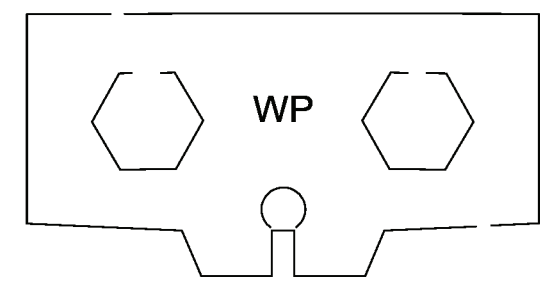
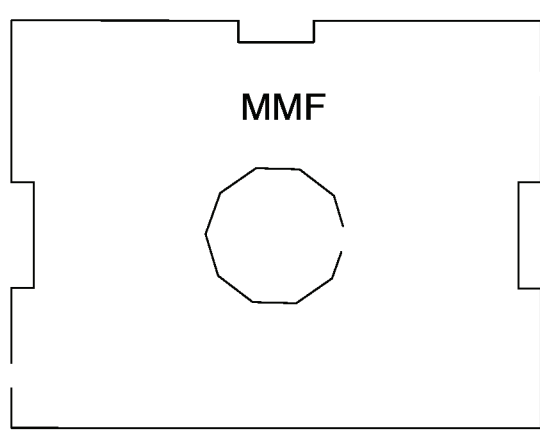
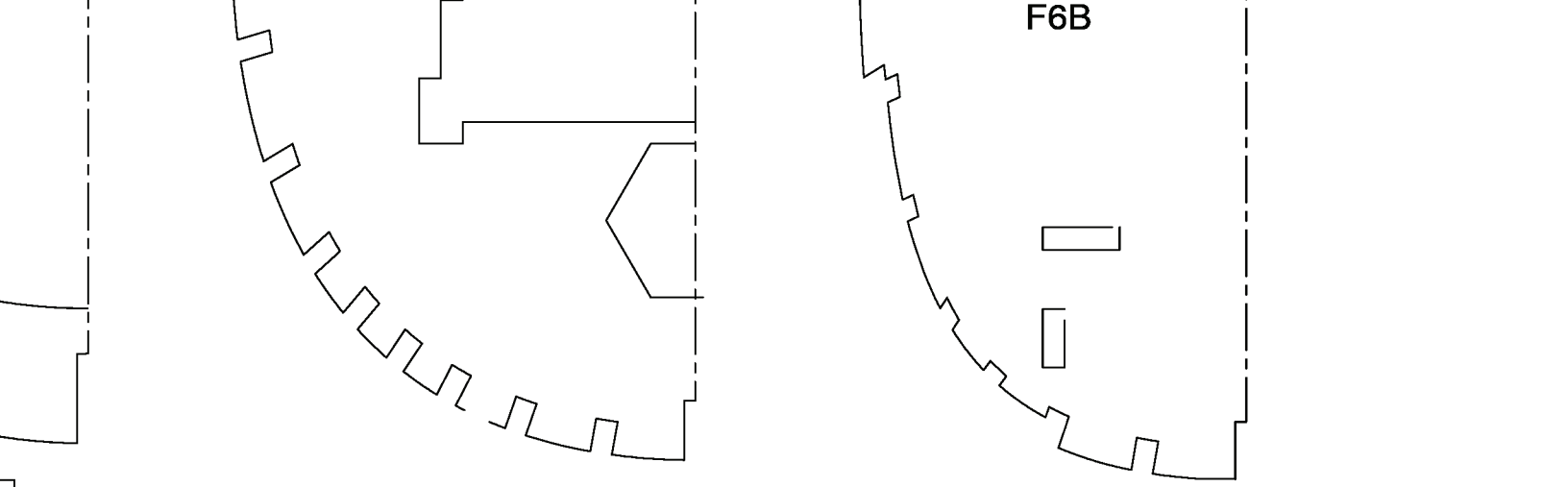
H4

H5

Reinforce pockets
with scrap balsa
to accept pins
from vertical fin 4x







1/8" AIRCRAFT PLY--MA



R13



R14



R7



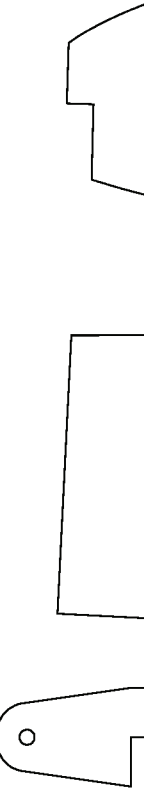
R15

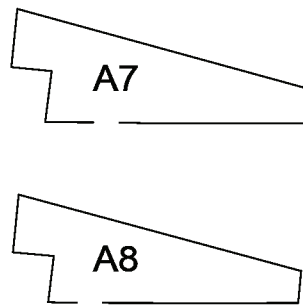
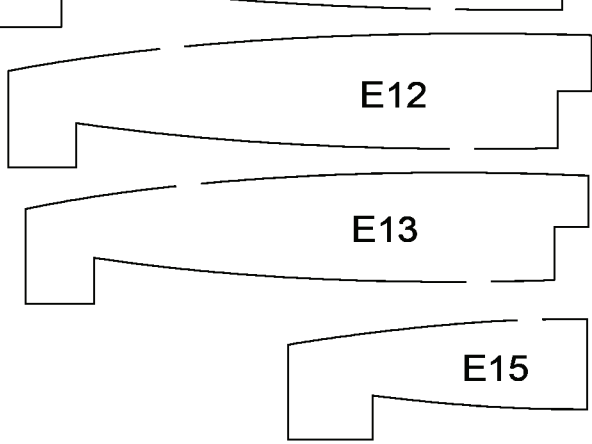
1/16" Balsa--MAKE 1 OF EACH



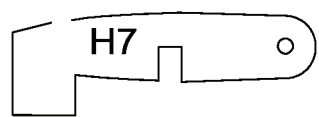
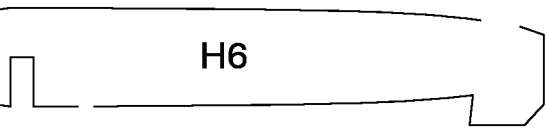
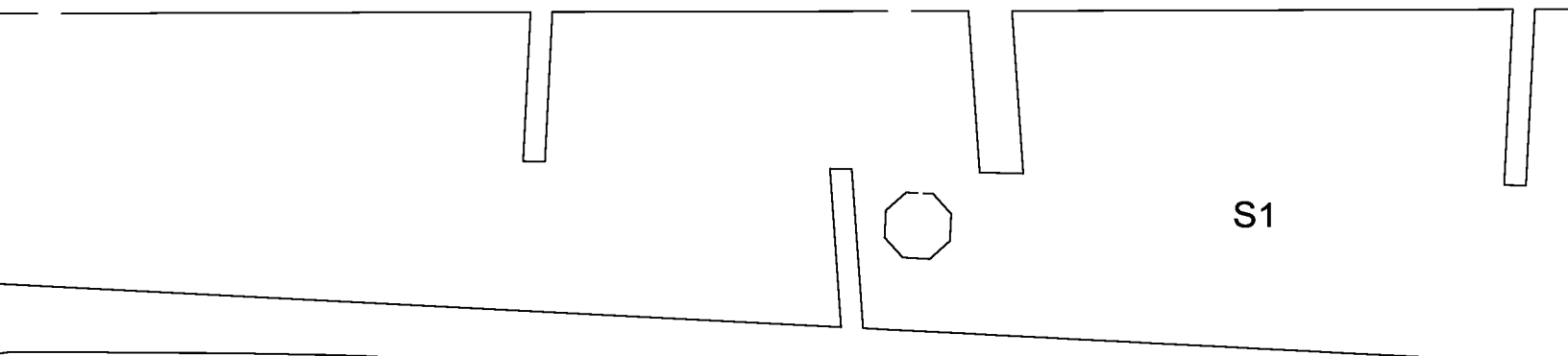
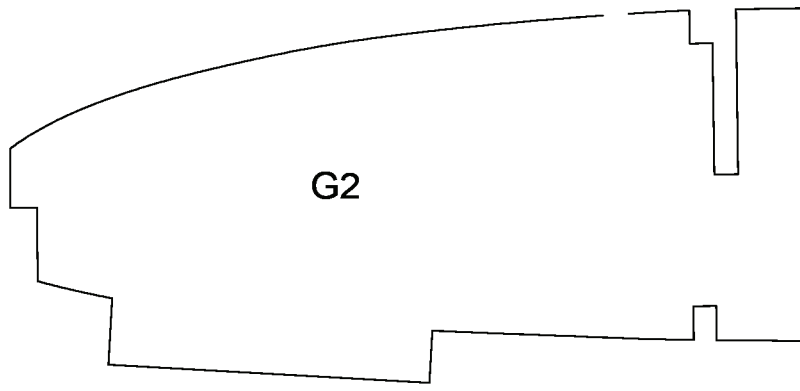
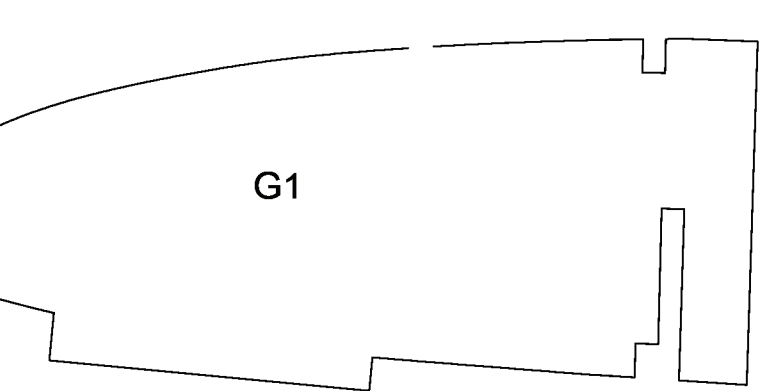
MMB/BATT

MAKE 1 OF EACH





1/16" Balsa--MAKE 2 OF E



1/8" AIRCRAFT PLY--MAKE 2 C

A12

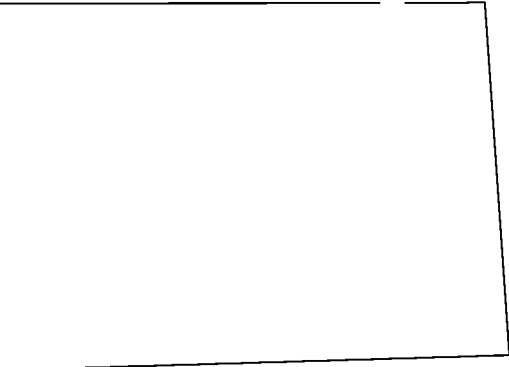
A13

A14

EACH

G3 x 6

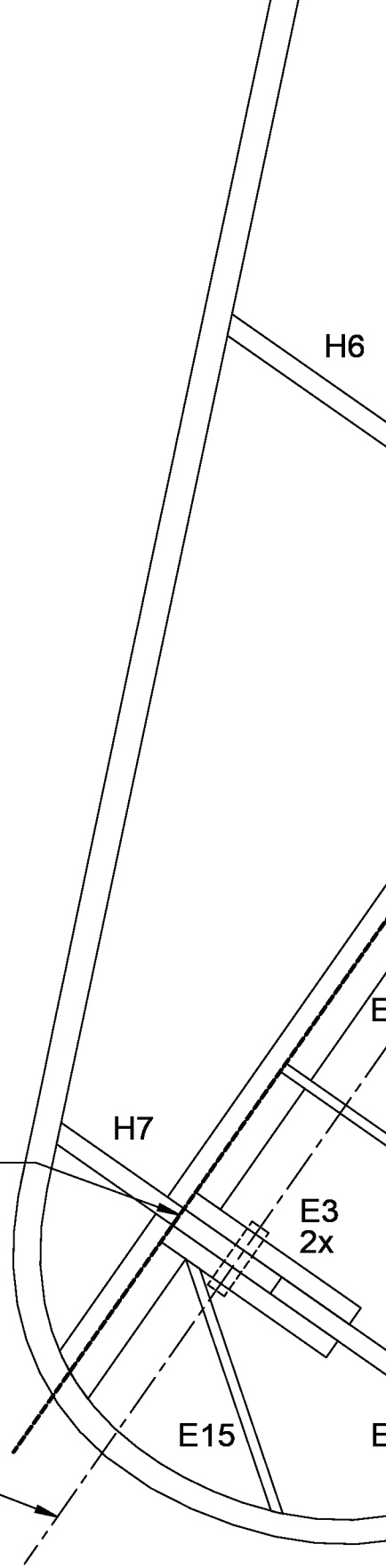
WB1

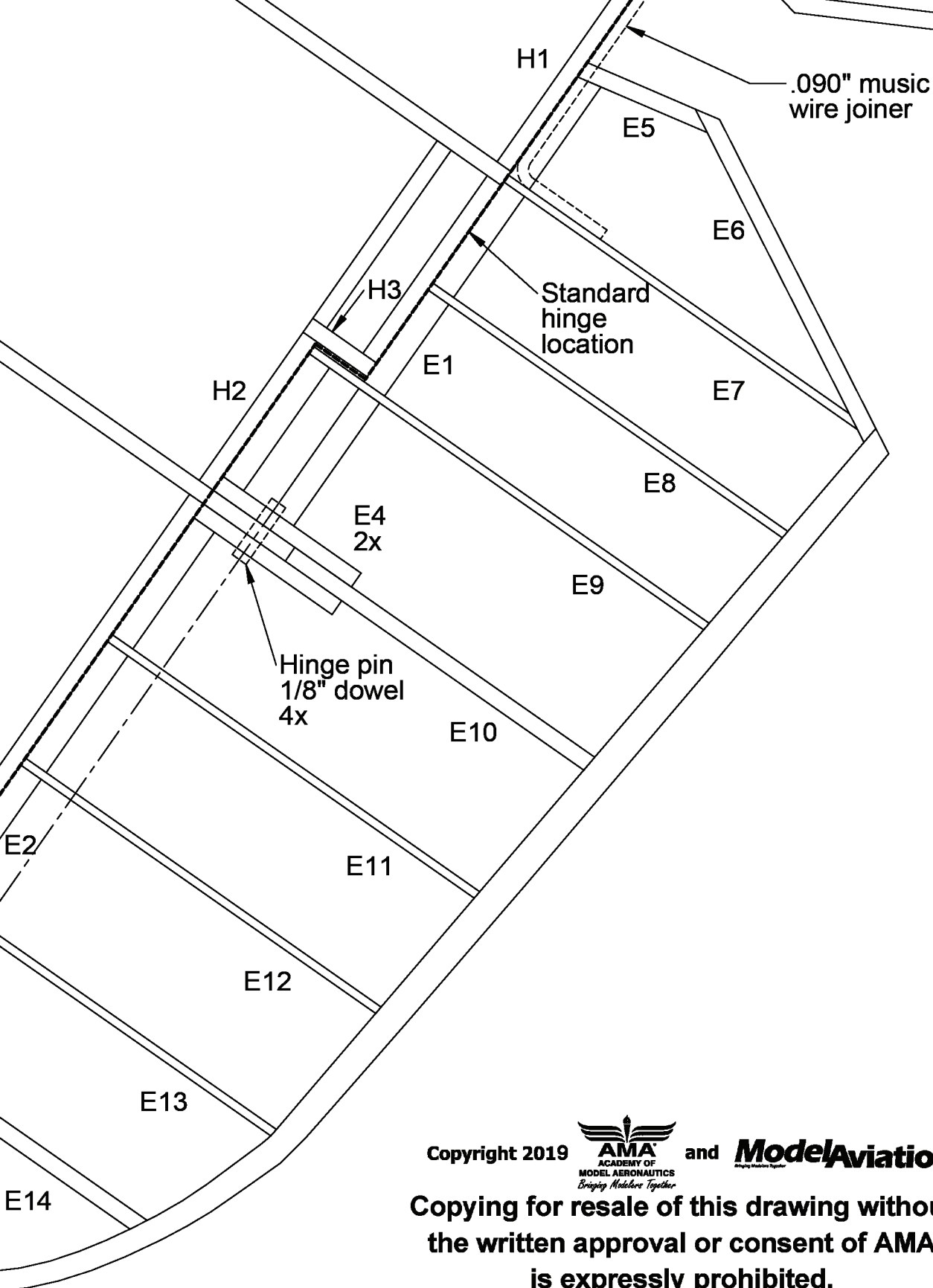


OF EACH UNLESS OTHERWISE NOTED

Elevator parting line

Full scale hinge axis





TAIL GROUP ASSEMBLY

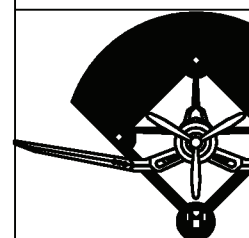
Assembly of the horizontal stabilizer. Again, ply ribs extend beyond the control surfaces. Please follow for best results.

1. Begin tail group assembly with three strips of 1/16" ply.
2. Pin the cured outlines to the board.
3. Install the Elevator ribs.
 1. Build the lead-in ribs.
 2. Parts E3/E14 are the main ribs. Posts H6 and H7 are the hinge pins.
 3. Unpin the assembly and remove parts E1 and E2.
 4. Pin the assembly back to the board.
4. Assemble the Horizontal Stabilizer.
 1. Be careful not to damage the pockets.
5. Separate the Elevator ribs from the outlines where they meet the board.
6. Sheet the upper Horizontal Stabilizer to the board.
7. Unpin and remove the Horizontal Stabilizer and sheet the lower Horizontal Stabilizer to the board.
8. Sand to shape.
9. Hinges--drill through the ribs.
 1. Add standard hinge pins for strength.

Copyright 2019  and **ModelAviation**
 ACADemy OF MODEL AERONAUTICS
Bringing Modelers Together

Copying for resale of this drawing without the written approval or consent of AMA is expressly prohibited.

INFIELD ENGINEERING



Laser cut kit available!

www.infieldengineering.com

MBLY--HStab and Elevators

horizontal surfaces is similar to the vertical.
back from the fixed surface into the
we follow the assembly order below for

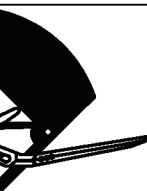
assembly by laminating outlines from
1/16" x 1/2" balsa around a form.
lines into place over the plan.
for framework parts in numerical order.
leading edge of the Elevators first.
E4 and E4/E10 form pockets that hinge
and H7 will fit into later
assembly and cut through the Elevator LE
and E2 to clear the hinge pockets.
assembly back down to the board.
Horizontal Stabilizer framework parts in order.
do not glue H6 or H7 to the elevator hinge

Elevators from the HStab by cutting through
as shown.
HStab with 1/16" balsa while pinned flat to
remove the support feet from the bottom of the
the bottom side.

through E3/H7/E3 and E4/H6/E4 and pin.
and hinge where shown for additional

Plan No. 1118

ENGINEERINGtm by Paul Kohlmann

 Copyright 2019 ing.com	Title 60" Douglas TBD Devastator		
	Size X	Dwg. No. Douglas Devastator	Rev A
	Scale: 1:1	Weight: 75oz	Sheet 3 of 4